
EPSON EB-1900 SERIES

CAPTIVATE YOUR AUDIENCE



EPSON[®]
EXCEED YOUR VISION

IDEAL FOR INSTALLATION

When ceiling-mounted, the Epson EB-1900 Series offers pure projection power for conferences, classes or meetings. Count on its 4000 lumens light output and superior colour quality to make your presentations shine.

Position where you please

Powerful 1.6 zoom projection lets you keep the screen in sharp focus from almost any spot overhead. Easy vertical and horizontal keystone settings and Epson's latest Quick Corner technology place the picture exactly where you want.

Brilliant image quality

Compact, lightweight and easy to install, the Epson EB-1900 Series offers an incredible 4000 lumens of brilliant White and Colour Light Output. To help you manage it all, the Epson EB-1900 Series features eight colour modes and an ecological lamp mode to suit your needs.

Easy management with EasyMP Monitor

The latest Epson EasyMP Monitor software lets your IT team manage all of the projectors on site from a single PC. The equipment can be reconfigured and e-mail alerts can be set to enable preventive maintenance on lamps and filters.



Flexible positioning thanks to optical zoom (1.6 x)



Easy maintenance with network monitoring and control

EPSON EB-1830



XGA



3500 lm

EPSON EB-1910



XGA



4000 lm

EPSON EB-1920W



WXGA



4000 lm

COMMON SPECIFICATIONS



10 W



2-in-1
USB display



PC free



LAN



3.4 kg

Low noise, high-performance cooling: enhanced air filtering keeps your projector cool and dust-free.

Built-in 10W speaker: no external sound equipment required.

Real and virtual protection: kensington lock and password protection plus wireless LAN unit lock and security.

No stress: ready to go straight away thanks to quick start-up and instant off.

Instant control: use the sliding lens cover or AV mute to get the audience's full attention.

Wi-Fi connection: ideal for cable-free presentations and workgroups.

Front exhaust exit: attendees are not disturbed by heat escaping from the front of the projector.

Long life, low wattage: Epson's unique mirrored E-TORL lamp design halves the power required to deliver 4000 lumens light output.

Smart features



Plug in: compatible with optional Epson Visualiser for projecting 3D items, documents or illustrations without photocopying or scanning.



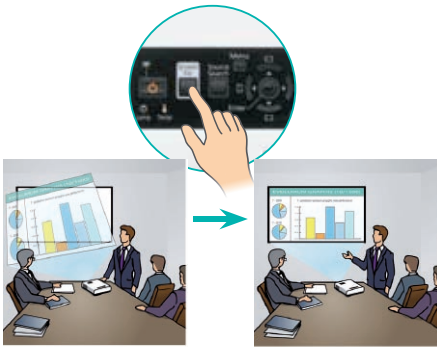
Colour-coded remote: redesigned to put more user-friendly features within easier reach.

Multi-screen display



Combined screens are a great way to show complex spreadsheets or panoramic pictures. Epson EasyMP Network Presentation lets you present up to four different visuals and move between them by linking your PC to up to four projectors.

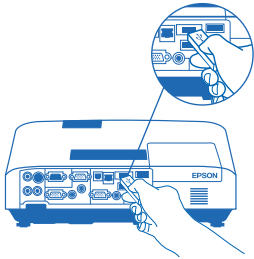
PERFECT TO CARRY WITH YOU



Projection without Screen Fit

Projection with Screen Fit

Easy connection without cables



PC free: now you can carry several presentations in your pocket on a USB key and project whichever one of them you choose.



Wi-Fi with sound: thanks to the integrated Wi-Fi connection, you can transmit images and sound directly from your PC to the projector and its built-in speaker system.

With your Epson EB-1900 Series you can plug in the power, put in your USB key and get straight down to business. Just place the projector and, in any light condition, you'll be ready to start in seconds.

Automatic adjustment

Thanks to its user-friendly features, the Epson EB-1915 and Epson EB-1925W are easier to set up in any size meeting room when you are on the move. Automatic vertical and horizontal keystone and focus take the stress out of setting up. Even if your projector gets moved slightly or isn't directly facing the screen.

Smart projection features

Wherever you are working, the Epson EB-1915 and Epson EB-1925W offer advanced features for easier connection to the most popular presentation media on the market.

- **3-in-1 display:** a single USB cable connection from your computer to the projector is all it takes to manage the image, sound and page-by-page display of presentations - even in wide screen format.
- **HDMI:** the latest standard PC-interface for high definition digital sound and images is ideal for leading-edge graphics and applications in engineering by agencies, architects and design consultants.

Travel light

The Epson EB-1900 weighs as little as 3.5 kg and is easy to pick up and carry anywhere in its soft padded carrying case.

EPSON EB-1915



XGA



4000 lm

EPSON EB-1925W



WXGA



4000 lm

COMMON SPECIFICATIONS



10 W



3-in-1
USB display



PC free



WiFi



HDMI



LAN



3.5 kg

SHOW YOU MEAN BUSINESS

With five models to choose from, whether you are looking to install your projector or take it with you on the road, the Epson EB-1900 Series offers your business the best of both worlds.

All you need to choose from

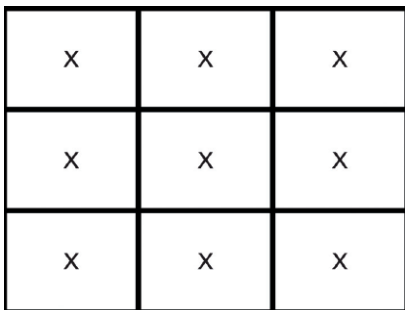
The Epson EB-1900 Series lets you manage image, sound and your remote control with just one plug in the 3-in-1 USB connection. When you have something to show, the optional Epson visualiser lets you pick up and project images of the book, page or 3D item in question. The built-in speaker is guaranteed to get you heard. And to ensure the optimum flexibility for business users, the Epson EB-1915 and EB-1925W also feature HDMI and wireless connectivity.

Shine your brilliant professional image

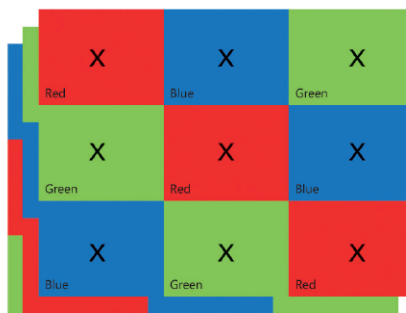
The Epson EB-1900 Series lets you shine in the lecture hall or conference room as well as when you are travelling. Thanks to its 4000 lumens White and Colour Light Output people are certain to see what you mean, even in broad daylight or with the meeting room lights on to make notes.

Colour Light Output, the new metric for projector brightness

Epson provides Colour Light Output specification data. Colour Light Output measures a projector's ability to deliver colour. Colour Light Output provides users with a simple, accurate and easy way to evaluate projector colour performance.



Brightness (or white light output) measures the total amount of white light projected in lumens on a nine-point grid



Colour Light Output uses 3 sets of a nine-point grid to measure the primary colours – red, green and blue



Source Futuresource Consulting Ltd.

3LCD technology

This unique Epson technology provides superb image quality with smooth and natural colour reproduction.



Better Products for a Better Future

Energy efficient and eco-friendly, Epson projectors are made with the future in mind.

- Reduced energy consumption - less than 1W in standby mode
- Paint-free design and recyclable packaging
- Super long-life E-TORL lamps with low power consumption

PRODUCT DIMENSIONS AND SPECIFICATIONS

SPECIFICATIONS	Epson EB-1915	Epson EB-1925W	Epson EB-1920W	Epson EB-1910	Epson EB-1830
Projection system (3LCD)	0.7" with MLA (x3) polysilicon TFT active matrix	0.74" with MLA (x3) polysilicon TFT active matrix		0.7" with MLA (x3) polysilicon TFT active matrix	
Native resolution	XGA (1024 x 768)	WXGA (1280 x 800)		XGA (1024 x 768)	
Native aspect ratio	4:3	16:10		4:3	
Resolution supported	Up to UXGA / 1080p	Up to WSXGA+ / 1080p		Up to UXGA / 1080p	
White Light Output (brightness)* (normal / eco mode)	4000 lm / 2700 lm			3500 lm / 2350 lm	
Colour Light Output (normal / eco mode)	4000 lm / 2700 lm			3500 lm / 2350 lm	
PROJECTION LENS	1.75 - 2.42 / 24.0 - 38.2 mm				
F-number / Focal length	Optical Zoom 1.6x				
Zoom ratio	10:1				
Offset	10:1	15.6:1		10:1	
Throw ratio	1.62 - 2.61:1	1.45 - 2.33:1		1.62 - 2.61:1	
LENS PROTECTION	A/V mute slide lens shutter				
LAMP	230 W UHE - E-TORL / 2500 hours - 3500 hours (normal / eco mode)				
IMAGE	Full-colour (16.77 million colours)				
Colour reproduction	2000:1				
Contrast ratio*	30" to 300", 60" screen: 1.87 - 3.05 m (projection distance) for 1925W and 1920W 60" screen: 1.97 - 3.21 m (projection distance) for EB-1915, EB-1910, EB-1830				
Screen size					
Keystone correction	Vertical: ±30° (automatic) Horizontal: ±20° (automatic)		Vertical: ±30° (automatic)		
VISUAL INPUT	2 x D-sub 15-pin (RGB), 1 x USB 2.0 type B				
Computer	1 x RCA, 1 x S-Video, 2 x Component (D-sub 15-pin)				
Video	1 x USB 2.0 type A				
USB flash drive	1 x USB 2.0 type A				
Digital	1 x HDMI**				
Epson USB Visualiser	1 x USB 2.0 type A				
VISUAL OUTPUT	1 x D-sub 15-pin				
Monitor					
AUDIO INPUT	2 x Stereo mini-jack				
Computer	1 x RCA (White/Red)				
Video	1 x HDMI**				
Digital					
AUDIO OUTPUT	1 x Stereo mini-jack				
Computer	1 x RS-232C (D-sub 9-pin), 1 x LAN (RJ45)				
Control					
BUILT-IN SPEAKER	10W				
WIRELESS CONNECTION	1 x wireless LAN unit		Not available		
ADVANCED FEATURES	Instant off, source search, 8 colour modes, A/V mute, freeze, e-zoom				
SCREEN FIT	Yes		No		
FOCUS	Automatic powered focus		Manual focus		
SECURITY	Padlock, security cable hole, Kensington lock, password protection, wireless LAN unit lock for EB-1925W and EB-1915				
DIRECT POWER ON/OFF	Yes				
POWER REQUIREMENTS	100 - 240 V AC ±10%, 50/60 Hz				
Power supply wattage	319W / 237W (normal / eco mode)				
Power consumption lamp on	6.8W (network on) / 0.3W (network off)				
Power consumption stand-by	6.8W (network on) / 0.3W (network off)		8.8W (network on) / 0.3W (network off)		
OPERATING TEMPERATURE / ALTITUDE	5°C to 35°C / 0 m to 2286 m (high-altitude mode over 1500m)				
WEIGHT	3.5 kg		3.4 kg		
DIMENSION (D X W X H)	Excluding feet: 257 x 357 x 86 mm				
FAN NOISE	37 dB / 29 dB (normal / eco mode)				
ON-SCREEN MENU	34 languages: English / French / German / Italian / Spanish / Dutch / Portuguese / Russian / Swedish / Norwegian / Finnish / Danish / Bulgarian / Polish / Hungarian / Czech / Slovak / Romanian / Croatian / Slovenian / Ukrainian / Catalan / Greek / Turkish / Arabic / Hebrew / Japanese / Simplified Chinese / Traditional Chinese / Korean / Thai / Indonesian / Malay / Vietnamese				
SUPPLIED ACCESSORIES	3.0 m power cable, 1.8 m D-sub 15pin (Male/Male) computer cable, 3.0 m USB type A/USB type B cable, remote control with batteries, soft carrying case, bundled software, password protect sticker, user's manual				
OPTIONAL ACCESSORIES	Spare lamp ELP53 - Air filter ELPAP24 - Epson USB Visualiser ELPDC06 - Quick wireless connection USB key ELPAP06 - 80" mobile screen: 16:9 (ELPSC21), 16:10 (ELPSC24) - Multi-aspect screen: 65"/ 74"/ 80" (ELPSC26)				
SAFETY REGULATIONS	IEC 60950-1 1 st edition (CE marking), EMC directive (89/336/EEC), Recycling regulations				
WARRANTY***	2 years on main unit / 1 year or 1000 hours on lamp				

* ISO 21118 based

** EB-1915 and EB-1925W only

*** Warranty offers are not available in all countries. Please contact your local Epson representative for more information.



EPSON
WORLD LEADER
IN PROJECTORS

Better Products
for a Better Future

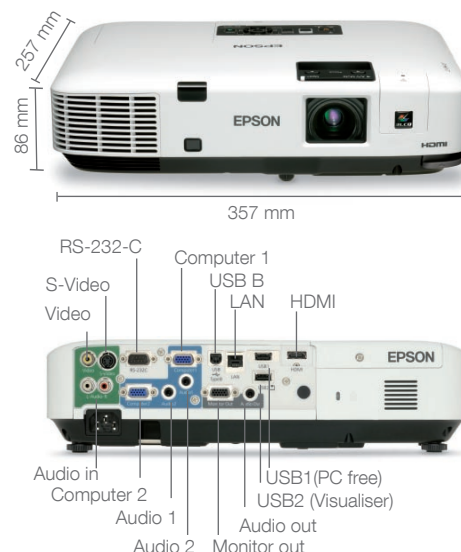
For further information please contact your local Epson office or visit www.epson-europe.com

Austria 0810/20 01 13 (0,07 €/Min.) Belgium 070/350120 (0.1735 €/min.) Czech 800/142 052 Denmark 44 50 85 85 Finland 0201 552 091
France 09 74 75 04 04 (Cost of local call, operator charges may apply) Germany 01805/23 41 10 (0,14 €/Min. aus dem dt. Festnetz, Mobilfunkpreise abweichend. Ab 1.3.2010 Mobilfunkpreis max. 0,42 €/Min.) Greece 210-8099499 Hungary 06800 147 83 Ireland 01 436 7742 Italy 02-660321 10 (0,12 €/min.) Luxembourg 900/43010 (0,24 €/min.) Middle East +9714 8818934 Netherlands 0900-5050808 (0,05 €/oproep + 0,15 €/min.)
Norway +47 67 11 37 00 Poland 0-0-800 4911299 (0,16 zł/min.) Portugal 707 222 111 Russia (095) 777-03-55 Slovakia 0850 111 429 South
Africa (+2711) 465-9621 Spain 93 582 15 00 Sweden 0771-400135 (Mobilsamtal - 0,99 kr/min, Lokala samtal - 0,30 kr/min, Utlandssamtal - 0,89 kr/min)
Switzerland 0848 448820 (4-8 cent./min.) Turkey (0212) 3360303 United Kingdom 0871 222 6702

Trademarks and registered trademarks are the property of Seiko Epson® Corporation or their respective owners. Product information is subject to change without prior notice.

Shutterstock Images LLC © Sean Prior

EPSON EB-1900 SERIES



EasyMP specifications

ADVANCED FUNCTIONS	Epson EB-1900 Series
Network monitoring functions	Projector control and projector management via network (wireless or wired LAN): monitor power status, lamp status, lamp hours, temperature level, error information, IP address; control Epson projectors (Power On/Off, change input sources), e-mail notification, timer function. Other features: SNMP, web control, PJ-link, projector control
EPSON NETWORK PROJECTION FUNCTIONS	
Wired LAN connection	EB-1925W/EB-1915: yes (image and audio); EB-1920W/EB-1910/EB-1830: yes (image)
Wireless connection	EB-1925W/EB-1915: yes with audio (up to 54Mbps) included wireless LAN module (802.11a/b/g)
Security (Wireless LAN)	EB-1925W/EB-1915: WEP, WPA-PSK (TKIP/AES), WPA2-PSK (TKIP/AES), EAP-TLS, PEAP/MS-CHAPv2, EAP-TTLS/MD5, EAP-TTLS/MS-CHAPv2, PEAP/MS-CHAPv2, PEAP/GTC, LEAP, EAP-Fast/MS-CHAPv2, EAP-Fast/GTC
Advanced network projection functions	EB-1925W/EB-1915: Multi-screen display (up to four projectors) with Windows 2000 and XP, Quick Wireless Connection, Movie sending (MPEG2, MPEG4, WMV) EB-1920W/EB-1910/EB-1830: Multi-screen display (up to four projectors) with Windows 2000 and XP
USB display (USB Type B input)	EB-1925W/EB-1915: 3 in 1 (image, control, and audio) EB-1920W/EB-1910/EB-1830: 2 in 1 (image and control)
PC-free (USB type A input)	EB-1925W/EB-1915: Image: .bmp / .jpg / .png / .gif, movie: .mp4 (video: MPEG4, MPEG4 AVC, audio: AAC), .mpg (video: MPEG1, MPEG2 / audio: MPEG-1 layer2, PMC) / .wmv (video: WMV8, WMV9 / audio: WMA, LPCM) Presentation scenario: .sit (created by Epson applications) EB-1920W/EB-1910/EB-1830: Image: .jpg
Certified for Windows Vista™ Network projector function	EB-1925W/EB-1915: Wired or wireless connection between projector and computer with Windows Vista™ operating system (excluding Home Basic edition)

EPSON®